

# ST. LEO THE GREAT

CATHOLIC CHURCH, HILTON, NY

## *Town Hall Meeting...Welcome!!*

September 25 & 27, 2022

**Mission Statement** - *“Provide a warm and supportive community to aid in the salvation of souls, to promote evangelization, and to serve God, our congregation and our world.”*

## Agenda

- ▶ ***Opening Prayer & Introductions - 5 Min.***
- ▶ ***Statistics & Trends - 5 Min.***
- ▶ ***Christian Formation - 10 Min.***
- ▶ ***Parish Finances - 5 Min.***
- ▶ ***7-Parish Update - 10 Min.***
- ▶ ***General - 10 Min.***
- ▶ ***FAQs - 5 Min.***
- ▶ ***Q&A - 10 Min.***
- ▶ ***Wrap-Up & Closing Prayer***

# Opening Prayer

*Lord our God,  
As we come together today to meet and  
communicate with one another,  
we ask you in your kindness  
to fill us with the knowledge of your will  
so that, pleasing you in all things,  
we may grow in every good work.  
We ask this through Christ our Lord.  
Amen.*

“He came and preached peace to you who were far away and peace to those who were near. For through him we both have access to the Father by one Spirit. Consequently, you are no longer foreigners and strangers, but fellow citizens with God’s people and also members of his household, built on the foundation of the apostles and prophets, with Christ Jesus himself as the chief cornerstone. In him the whole building is joined together and rises to become a holy temple in the Lord. And in him you too are being built together to become a dwelling in which God lives by his Spirit.” - **Ephesians 2:17-22**

# Introductions

## ▶ Fr. Joe

- ▶ Parish Staff
- ▶ Parish Pastoral Council
- ▶ Finance Council

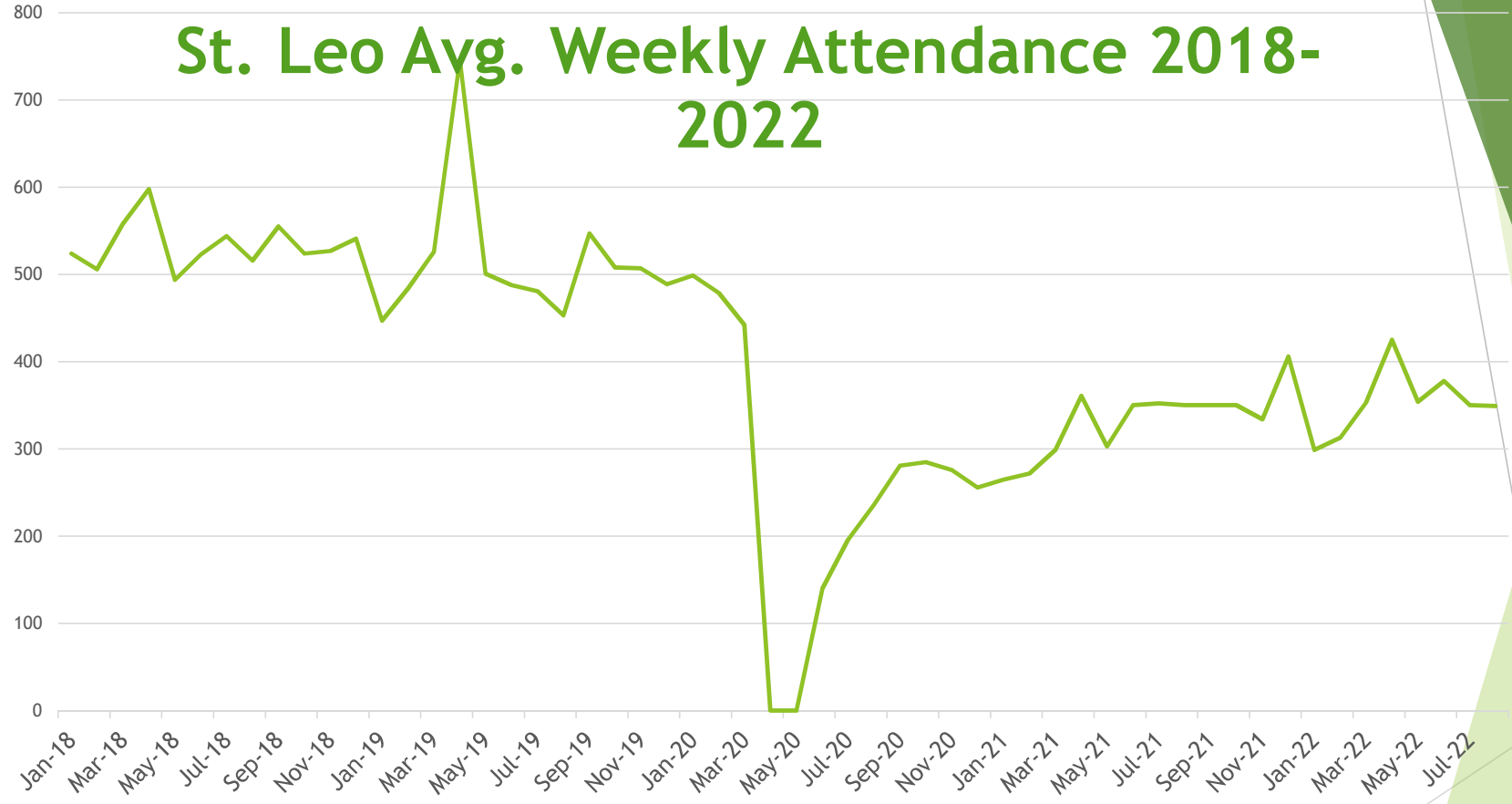
## By The Numbers (7/1/21-6/30/22)

- ▶ **St. Leo 1 of 86 Parishes In 12-County DOR**
- ▶ **Registered Parishioners = 778**
  - ▶ New N/A
  - ▶ Weekly Envelopes = 336 Issued/125 Collected (Avg.)
    - ▶ Electronic Giving (We Share 70 Donors)
      - ▶ NOTE: St Leo pays \$500-600/mo. re envelopes!
  - ▶ CMA Contribution = \$78,225 (206 Givers...\$380 Avg.)
    - ▶ 102.94% Of Goal!!
- ▶ **Weekend Mass Attendance = 350**

## By The Numbers (Cont'd)

- ▶ **Baptisms = 5**
  - ▶ Non-Parishioner Baptisms = 4
- ▶ **First Eucharist = 13**
- ▶ **Confirmations = 6**
- ▶ **Sacrament of Matrimony = 2**
- ▶ **Faith Formation/Rel. Ed. = 74**
- ▶ **Funerals/Deaths = 14**
- ▶ ***Total Active Ministries = 38***
  - ▶ *Music Liturgy (5 Choirs: 47 Singers & Musicians!)*

# St. Leo Avg. Weekly Attendance 2018-2022



Average Attendance Pre Covid: 550

Average Attendance Post Covid: 350



# Christian Formation

- ▶ What was your religious education experience like?
- ▶ Was it positive or negative, what was successful?
- ▶ What kind of program do you want to see here at your parish home?
- ▶ What are you willing to do to help make that a reality?

# Parish Finances

- ▶ **FY 21/22 Final (JUL 1 21-JUN 30 22)**
  - ▶ Total Revenue = \$503,071
  - ▶ Total Expenses = \$479,127
  - ▶ **NET = \$23,994\***
  - ▶ Summary & Highlights
    - ▶ \* **Positive \$\$...this is great news!!!**
    - ▶ Revenue down \$35K But Expenses Reductions (\$47K) Offset
      - ▶ Collections (88% of Revenue) off 5% Vs. Budget
    - ▶ Includes \$44,529 Non-Budgeted Capital Expenditure “Hit”
    - ▶ Upcoming Bulletin Insert

## Finances (Cont'd)

- ▶ **FY 22/23 Projection**
  - ▶ NET = \$2,678
  - ▶ Includes \$61,000 DOR School Assessment
- ▶ **FY 20/21 Results**
  - ▶ NET = \$20, 855
- ▶ **Many Investments Over Recent Years**
  - ▶ Parking Lot, Roof, Etc.

# Buildings & Grounds - Campus Facilities

- ▶ No Known Current Capital Expenditures!
- ▶ FY 22/23 Projects Being Done W B&G Labor
  - ▶ ADA Auto-Operators On South Church Entry Doors.
  - ▶ Wheelchair Seating Upfront (window side of church).
- ▶ *Future Needs*
  - ▶ Boiler replacement (\$8K Rectory & \$15K Parish Center) & New Lawn Mower (\$7K)
  - ▶ Others (Replace Carpet In Sanctuary, Continue Reviewing HVAC Equipment Upgrades, Doors & New Hardware Upgrades, Plan For New Grotto, Sealing & Striping of Parking Lot).

# 7-Parish Pastoral Planning Update

## ▶ Who is participating:

- ▶ Holy Cross, Our Mother of Sorrows, St. Charles Borromeo, St. John the Evangelist, St. Lawrence, St. Leo the Great & St. Mark

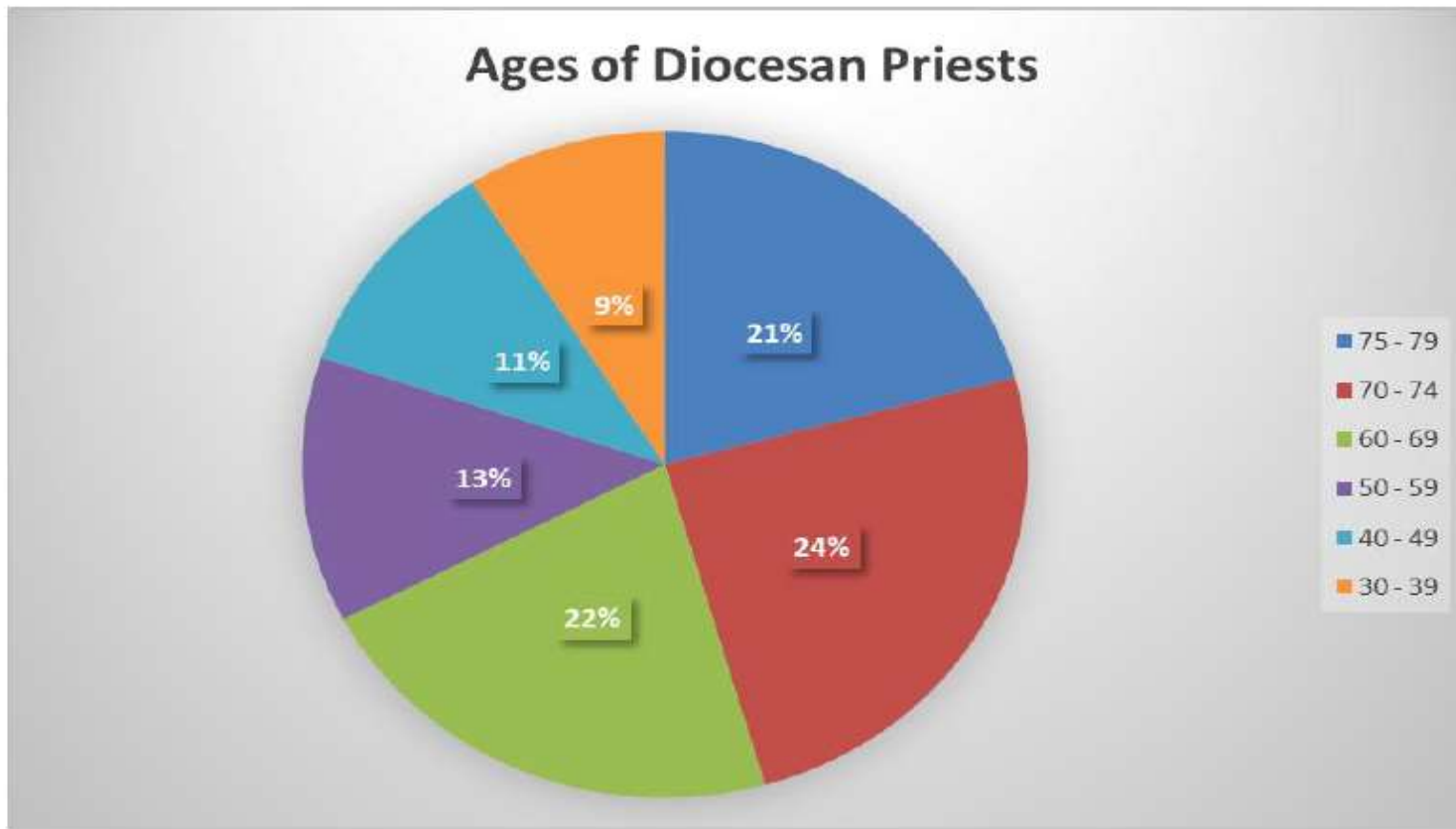
## ▶ Why:

- ▶ To work through challenges facing our parishes collaboratively and as the Catholic Church of Charlotte, Greece, and Hilton.
- ▶ Recommendations will be presented to the Bishop (likely 2023).

## ▶ St. Leo the Great participants:

- ▶ Father Joe, Father Bob, Barb Surash and Dave Jones

# 7-Parish Pastoral Planning Update



45% of Diocesan Priests are 70 or older...*Only 1 Ordained*

January 6, 2022

Office of Pastoral Resources and Planning



# 7-Parish Pastoral Planning Update

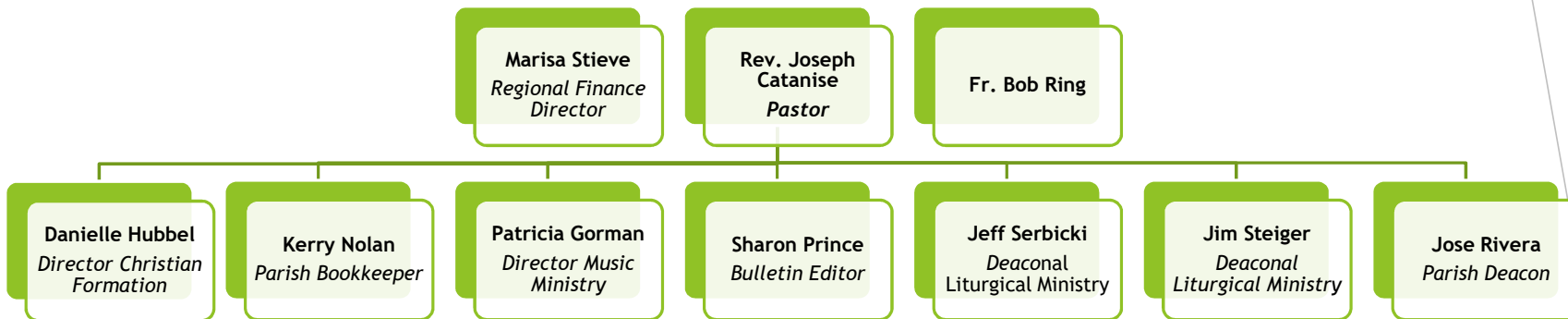
- ▶ **We are early in the process**
  - ▶ Information gathering phase.
- ▶ **No recommendations have been made**
  - ▶ Not ready at this time.
- ▶ **What do parishioners of St. Leo the Great think? Need your feedback.**
  - ▶ How will this area worship with fewer priests to serve us?
  - ▶ How can parishes collaborate?
    - ▶ Ex. - St. Leo/St. Marks: Shared Custodial, VBS, Pre-Cana, Bulletin Info

# General

- ▶ **Parish Organizational Structure**
- ▶ **Greatest Needs**
- ▶ **St Leo Mission**
  - ▶ 5-Yr Plan...St. Leo in 2027 and beyond
    - ▶ Where do we see ourselves and how do we get there??
- ▶ **Parish Communication & Social Media**
- ▶ **SYNOD Update**



# St. Leo Organizational Structure



*Dave Jones - Chair, PPC*  
*Dan Schwind - Chair, Finance*  
*Carol Lennon - Chair, Stewardship*

# Greatest Needs...Many Headwinds

- ▶ Leaders & Soldiers
  - ▶ PPC Members, Social Justice Co-Chairs, Stewardship!
    - ▶ Also Social Life & Fund Raising
- ▶ Mass Attendance
  - ▶ Down 200...let's all reach out!
  - ▶ *“Rejoice with me because I have found my lost sheep” - LK 15:6*
- ▶ Stewards!
  - ▶ Time-Talent-Treasure
- ▶ Evangelization!
  - ▶ *Who will be the hands and feet if not us?*

***Let us not just go to church, let's pick up our cross and BE the church.***

# Ways To Communicate

## ▶ Mail:

▶ 110 Old Hojack Lane, Hilton, NY 14468

## ▶ Phone:

▶ 585-392-2710

## ▶ E-Mail:

▶ [hstleoch@dor.org](mailto:hstleoch@dor.org)

## ▶ Website:

▶ [www.stleochurch.org](http://www.stleochurch.org)

## ▶ Facebook:

▶ [Facebook.com/stleohilton.](https://www.facebook.com/stleohilton)

# SYNOD Update

- ▶ **Diocesan phase of global synodal initiated by Pope Francis OCT 2021**
- ▶ **Three (3) Themes re Communion, Participation, Mission**
- ▶ **Listening Sessions/Discussions To Be Based on 10 Questions & Themes**
- ▶ **Synod meaning is to assemble and listen to the Holy Spirit re doctrinal, liturgical, canonical & pastoral questions that arise as time goes by.... “Listening Sessions”**
  - ▶ This synod aims to shift the church toward a more decentralized model of decision-making by inviting laypeople and those who have not traditionally had a voice in church leadership into discussions on how the church can be more inclusive and collaborative.
- ▶ **St. Leo Input Provided To DOR MAR 31 2022**

# SYNOD DOR Update

## ▶ 10-Page Synthesis Approved By Bishop Matano

- ▶ 2500 participants...forwarded To U.S. Conference of Catholic Bishops
- ▶ Part of Global Input To Vatican...Synod of Bishops Set For OCT 2023 Rome

## ▶ Snapshot of Synod “Themes”:

- ▶ *Contrasting Views and Divisions In Local Catholic Community*
  - ▶ *Role of Women, abortion, gender ID, same-sex, current society as a whole & secular polarization*
- ▶ *Need For Evangelization - Youth, Sacraments, etc.*
- ▶ *Impact of Covid - Mass Attendance, gaps in ministries, volunteers*
- ▶ *Concerns re church leadership & communication between DOR and parishes*
  - ▶ *Increasing demand on priests due to limited availability of priests*

# Parish 5-Year Plan

- ▶ **Started with a parish priorities survey in 2019**
- ▶ **Parish Council created a plan with those results**
  - ▶ COVID happened during this time - adjusted some goals
- ▶ **Covers multiple aspects of parish life**
  - ▶ Sacraments, Ministries, Financial, Shared Services

## Parish 5-Year Plan (Cont'd)

- ▶ **Have already met some of the goals**
  - ▶ Roof repair, new parking lot, updated ministry rosters
- ▶ **Continue to work on others**
  - ▶ Increase attendance and participation in Sacraments
  - ▶ Ministry leadership needs, shared services
- ▶ **Plan is on the website, will be reviewed annually**

## FAQS

- ▶ **Q1. - What is status of land sale, including Old Church Hall?**
  - ▶ *A1. - Purchase Offer Made & Accepted (\$350K); Currently On Hold Pending Grant Approval*
- ▶ **Q2. - What is St. Leo doing to encourage youth to participate in church activities and faith formation?**
  - ▶ *A2. - There are several (Danielle)*
- ▶ **Q3. - Why do we not have our own dedicated parish finance person?**
  - ▶ *A3. - DOR Policy, Affordability*



## FAQs (Cont'd)

- ▶ **Q4. - What is parish leadership doing to enhance communication?**
  - ▶ *A4. - We recognize the need for improvement thanks to all of your input. Some things we have implemented include:*
    - ▶ *Bulletin Inserts (Ministry Updates, Council Corner, Etc.) Town Hall Mtg*
- ▶ **Q5. - Will St. Leo be part of parish cluster?**
  - ▶ *A5. - TBD*
- ▶ **Q6. - What are we doing as parish to build community?**
  - ▶ *A6. - Social Justice (REACH, Catholic Charities, HOM, H-P Food Shelf) Parish Picnic, Apple Fest Booth, Oktoberfest, Bocce, PPC Reach-Out & Welcome Kit (124)*

# Wrap-Up

- ▶ **Recap**
- ▶ **Feedback**
  - ▶ Positives
  - ▶ Opportunities For Improvement
- ▶ **Thank You!!!**
  - ▶ Refreshments

*For I know the plans I have for you,” declares the LORD, “plans to prosper you and not to harm you, plans to give you hope and a future.” - Jeremiah 29:11*

## Closing Prayer

May God, the source of all patience and encouragement,  
enable us to live in perfect harmony with one another  
in the spirit of Christ Jesus.  
With one heart and one voice  
may we glorify God,  
now and forever.  
**AMEN.**